

RINXENT (MARQUISE)

Calais C3

50°48'10.35"N, 1°43'40.40"E

The RNAS airship station at Rinxent (to the south-east of Marquise and 3km due south of 1 ASD) was established in June 1915 to provide a base for SS airships patrolling the Straits of Dover on anti-submarine duty. The site had been handed over to the French by January 1916 although occasional British use of the site was made until 1918.



The original airship shed in Rinxent, photographed from a BE2c. The shed was later joined by a second, larger, one which measured 150 x 24 x 22m.

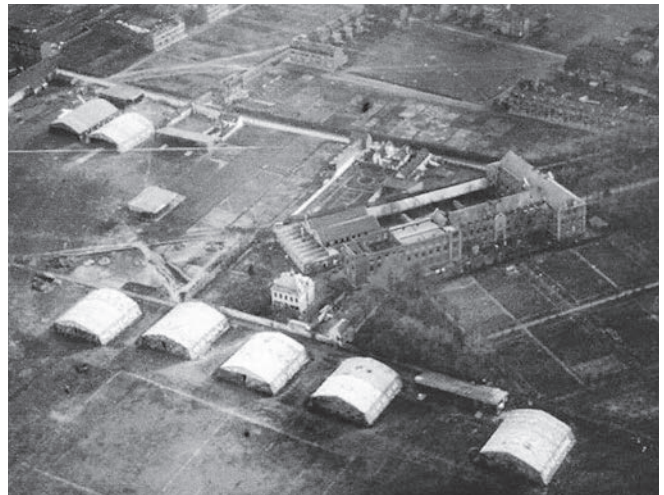
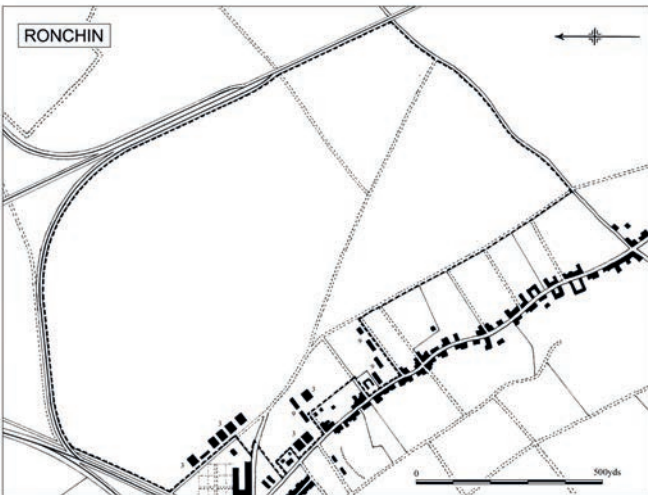
RONCHIN (650)

Tournai B.5, BEF Sheet 36.Q.23.b

50°36'36.62"N, 3°5'42.67"E

Recently abandoned by the Germans when the RAF took over. Six sheds were available with a very large landing ground. Billets were available in Ronchin village.

103 Sqn	26.10.1918	from	Floringhem	26.1.1919	to	Maisoncelle
---------	------------	------	------------	-----------	----	-------------



Situated on the outskirts of Lille, this was a massive aerodrome for the time. The original German Type B aeroplane sheds were hidden alongside housing on the western boundary. Although these were available to the RAF when it occupied the site, Bessonneau hangars were also erected in the north-west corner, adjacent to Hospital des Sourds-Muets.

ROUGEFAY (7A)

Lenc C.3

50°16'14.90"N, 2°10'53.02"E

Used during the summer of 1918, Rougefay had been abandoned well before the Hundred Days campaign was over.

87 Sqn	29.6.1918	from	Estrees-les-Crecy	19.9.1918	to	Soncamp
--------	-----------	------	-------------------	-----------	----	---------

ROULERS (ROESLARE)

Tournai B.1, BEF Sheet 20.R.27.b?

50°56'59.66"N, 3°7'46.02"E (town)

Identification of the RNAS landing ground at Roulers (Roeselare) is problematic, particularly as it was used for only one day during the retreat from Antwerp (Anvers). The site has been described as a small grass field separated by a ditch from a surrounding sugar beet crop, and also as a "comic sort of racecourse," visible from the church tower.

Eastchurch Sqn RNAS	13.10.1914	from	Ostende	14.10.1914	to	Ypres
---------------------	------------	------	---------	------------	----	-------