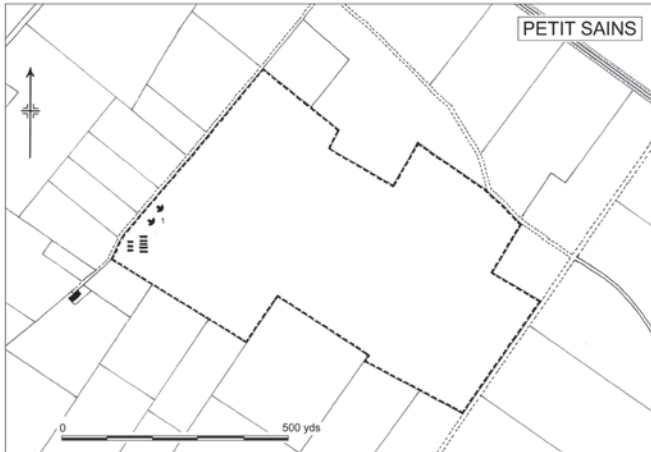
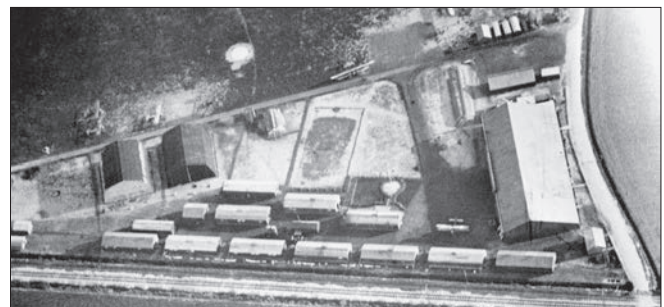
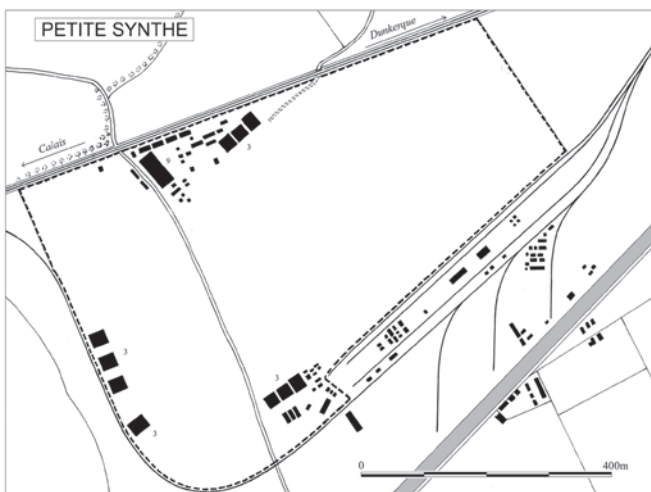


PERONNES (230)						
Namur B.1						
50°26'8.99"N, 4°9'2.37"E						
A German landing ground that was occupied for just one day.						
7 Sqn	25.11.1918	from	Staceghem	26.11.1918	to	Fort Cognelee
PETIT SAINS (108a)						
Lens I.1, BEF Sheet 36B.L.33.d.34.a.R.4.a						
50°27'17.10"N, 2°42'1.79"E						
Also known as Mazingarbe (the nearest town), the field at Petit Sains was regularly used by 40 Sqn as an Advanced Landing Ground during the summer of 1917. Being just a mile and a half from the trenches, no machines stayed overnight. In March 1918, Petit Sains offered two tented hangars and a hutted camp. By the Armistice, there were six Bessonneau hangars available.						
2 Sqn	20.10.1918	from	Floringham	26.10.1918	to	Genech
40 Sqn (det)	7.1917		Bruay	7.1917		Bruay



Originally an ALG, the aerodrome at Petit Sains had six Bessonneau hangars by late 1918 but their location has not been established.

PETITE SYNTHÉ (72)						
Dunkerque E.3, BEF Sheet 19.H.20.b.d						
51°0'30.01"N, 2°21'12.36"E						
Located a few kms SW of Dunkerque, Petite Synthe was established in late 1916 and was used by the RNAS until 1918, when RFC/RAF and USAS squadrons began to share its use. The local area was extremely flat and, because of the proximity to the coast, the landing ground suffered from ground mist in the morning and evening.						
7(N) Sqn	31.12.1916	from	Formed	2.4.1917	to	Coudekerque
11(N) Sqn	8.3.1917		Formed	27.8.1917		Disbanded
5(N) Sqn	1.4.1917		Coudekerque	6.3.1918		Villers-Bretonneux
6(N) Sqn	14.1.1918		Dover	31.3.1918		Ste-Marie-Cappel
11(N) Sqn	10.3.1918		Re-formed	24.10.1918		Iris Farm
87 Sqn	27.4.1918		St Omer	27.5.1918		Estrees les Crecy
49 Sqn	30.3.1918		Boisdinghem	3.5.1918		Conteville
218 Sqn	23.5.1918		Dover (Gunston Road)	7.7.1918		Frethun
85 Sqn	25.5.1918		Marquise	11.6.1918		St Omer
17th Sqn USAS	20.6.1918		Formed	20.8.1918		Auxi-le-Chateau
65 Sqn	19.9.1918		Bray Dunes	25.10.1918		Bisseghem



Left: The aerodrome was sandwiched between the Calais-Dunkerque railway and the Canal de Bourbourg. By 1918, the shed and hangars on the NW corner were occupied by 211 Squadron, while those in the SW corner housed 65 Squadron.

Above: The north-western corner of Petite Synthe in 1916 with RNAS Nieuports, Caudrons and a BE2c. The two Nestler hangars were later replaced by three Bessonneau hangars.